

### *A stone not made with human hands*

When I was young my mother used to say -‘look at the dogwoods, they’re blooming white crosses for Easter.’ I thought so too. But as I grew older I noticed the dogwoods sometimes bloom way before Easter, and way after too.

Sentimental symbols from nature. Not unlike the sand dollars we stared at with our own children; neat lacquered descriptions of the wounds of Christ, set alongside velvet paintings of lions, tigers and Elvis shaking hands with Jesus.

Statues are stones cut with human hands, traditionally made for kings and conquerors. The prophet Daniel had a vision of a massive statue, empire level potentates all rolled into one, someday giving way to a ‘stone not made with human hands’, a divine stone that would crumble the massive edifice of all the worldly kingdoms in history.

If you look at the Middle East from Space and squint a little, it looks like a king kneeling in prayer. The folded hands are the fertile Nile valley protruding from the sleeve. Saudi Arabia forms the main part of the body; the head and crown are Turkey and Greece. The long robe flows through Iran.



The only manmade geographic feature you can see from Space is the Suez Canal, which cuts through the wrist like a nail. At the bottom tip of the Nile valley stands the Great Pyramid of Giza - legends saw it as a symbol for the earth and its inner passageways a model of biblical history.

The descending passageway at the Pyramid’s entrance represented the descent of humanity after the fall. A cramped upward branch, forcing you to stoop the entire way, symbolized the legalism of Old Testament times, weighing people down with burdensome statutes. Then on to the birth of the Messiah, with a vaulted hallway on that same upward path, but where the visitor can stand fully erect, a freedom felt deep in the bones, literally. The rising angle of this passageway, when taken from the Great Pyramid’s coordinates, intersects Bethlehem of the Christmas story. 19<sup>th</sup> Century Indian Jones types made the most of these curious passageways, measuring their transitions with biblical dates, marked and calibrated by some clever alignment with the stars.

So we have a stone relief of a king kneeling in prayer over the earth and its history, bearing a crucifixion wound inflicted by the very people for whom he prays. What we would call a good king, it seems to me. And there is a place near the king’s breast the world calls the Holy Land. All of this by some freak alignment between history and nature.

But it’s called the Holy Land, not because of the image of the wounded king we can only see from Space, but because it is the center of the redemption story as it unfolded over thousands of years; where the Lord himself had been that perfect witness, not only as an example to follow, but as an expression of divine love for a broken humanity.

If we let these stones speak a little more, key historical events appear marked by their distances to Jerusalem's Temple Mount in the heart of the Holy Land. What an odd thing; that significant dates in history should appear as geographic distances to this Holy place.

That would not have surprised the ancient Hebrew sages; they believed God had chosen this Mount as the center of earth, the center of life. These are the hills Abraham climbed on his horrific mission of faith, the hills where Jesus was nailed to a cross, as if his crucifixion would somehow reach beyond its gentle slopes.

So yes, Jerusalem and its Temple Mount has been a place where history has been shaped like no other. And yes, it has emerged again today as an intractable international issue, just as the Bible prophesied it would become in the Last Days; '*a burdensome stone for the nations*', quite literally so today, an irresolvable conflict for the UN General Assembly.

But it is quite another thing to claim that its very location was a kind of prophetic cipher of future events in world history. Yet according to John Maynard Keynes, even Isaac Newton had become fully absorbed in such arcane musings, a discovery that shocked Keynes and Newton's friends as well. Perhaps that is why they shuffled him off to London to become Warden of the Royal Mint, a prestigious position with a substantial income, a habitat more suitable for a prominent scientist of the Enlightenment.

A patronage job to be sure, but the appointment turned out fortuitous. Newton's deep knowledge of chemistry, metallurgy, mathematics, and the intensity he brought to any task, reformed the British Mint and coinage processes, virtually eliminating the widespread counterfeiting and other corrupt practices that were profuse in England at that time. Newton's efforts helped establish the English pound as a premier currency of the day, while keeping his more esoteric pursuits at bay.

And that was the end of that, until David Flynn wrote '*Temple at the Center of Time*' and took up where Newton's sacred mysticism left off.

Flynn made measurements from the Temple Mount using the Federal Aviation International Model, a forerunner of Google Earth, or NASA's WorldWind earth model. By making point to point measurements he discovered a correlation between historical events and their distances to Jerusalem's Temple Mount <sup>(1)</sup>.

According to Biblical dating the Hebrews escaped slavery in Egypt around 1441 BC, and he measured 1,441 thousand feet from the Great Pyramid to the Temple Mount. A millennium later, the Hebrew people were freed by Cyrus from Babylonian captivity, after Cyrus had conquered Babylon in 539 BC. And Flynn measured 539 Statute Miles from Babylon to the Temple Mount.

In 333 BC Alexander the Great defeated the Persians at the Battle of Issus. The battle's significance relates to a prophecy in Daniel 8, believed to be about the eventual desecration and recovery of Jerusalem from the future Seleucid ruler Antiochus Epiphanes. And according to modern Orthodox Rabbis, it is also the benchmark from when the Jewish people would again recover Jerusalem a second time, where the 2300 days mentioned in Daniel 8 are interpreted as 2300 Passovers, ending as they did in 1967 when Jerusalem was recaptured. And Flynn measured 333 Statute Miles from the Temple Mount to that ancient battlefield.

In the 1<sup>st</sup> Century AD, Jerusalem and the Temple were laid waste by Rome's legions, and ever since a Hebrew homeland was barely imagined, until Napoleon freed the Jewish people from the European ghettos, removing all restrictions on where they could live and the professions they could enter.

Less well known was Napoleon's Proclamation in 1799 AD that a homeland encompassing Jerusalem be returned to the Jewish people still scattered throughout the earth. And Flynn measured 1799 Nautical Miles from the Temple Mount to the foundation stone at the center of Paris.

Through the cooperation of Great Britain, a homeland was reborn for the nation of Israel in 1948 AD, and Flynn measured 1948 Nautical Miles from the Temple Mount to the foundation stone of London.

Mecca's Kaaba, constructed in the 7<sup>th</sup> century AD, came out at 666 Nautical Miles from the Temple Mount. And for much of the church in those following centuries, the rise of Islam was a virtual fulfillment of the Book of Revelation, complete with the persecution and retreat of Christianity throughout most of the ancient world, and continuing on into today.

Stranger still is the way these distances from the Temple Mount change from 'Statute miles' to 'Nautical miles', as Biblical history shifted from the Old Testament, a book of laws or statutes, to the New Testament, a faith awash in nautical symbolism, setting it's sails for the ends of the earth.

As if Flynn's findings were not peculiar enough, an Israeli scientist, Saul Kullok, recently developed an algorithm based on how the Earth's mean axis tilt correlates with major migrations in Jewish history.

According to Kullok, *"It proves that God established a timetable in nature, that this is what determines the movement of the earth and not just the known laws of nature"*.

What led this accomplished scientist down such a rabbit hole?

Perhaps speculating on how the earth's tilt might influence Israel's climate; how it might align with Old Testament prophecies of Diaspora and Israel's subsequent desertification – and how it might align with the modern return or Aliyah of Jewish people and Israel's abundant agricultural boom. I don't know.

But it's a little shocking to me that Flynn's measurements along the surface of the earth and Kullok's algorithm on earth's axial tilt agree on the date for the return of the Hebrews from Babylon in 539 BC. And are very nearly the same on the Exodus; Flynn had the Exodus at 1441 BC and Kullok came out at 1476 BC, if I read them correctly.

To our modern ears there can't be anything more ridiculous than such mathematical esoterica from David Flynn and now Saul Kullok. Except that they end up in close agreement despite being based on totally unrelated measurements, save for the common hand of God.

~

We see through a glass darkly, to quote St. Paul ... quite the understatement, in my opinion.

But this image of a wounded king praying over the world and its history appeals to me more than my mother's dogwood blossoms.

It is as if the very topography of the earth is carved and staked with the redemption story, no longer just an imaginary stone in some prophet's dream.

*'And if they become silent the very stones will cry out'*

Gospel according to Luke

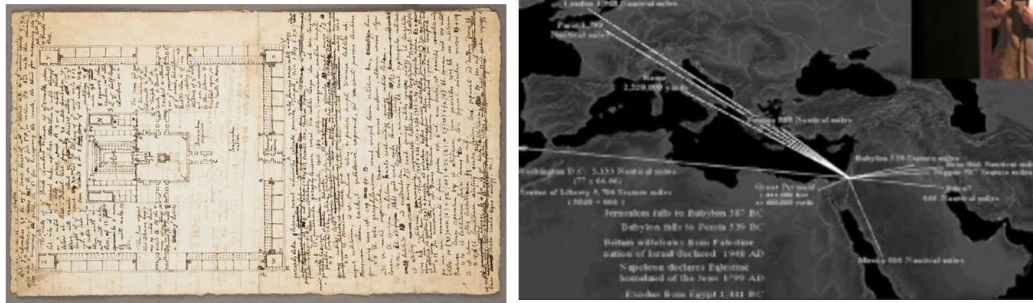
## Postscript

- (1) It's popular today to see the spiritual and physical as separate domains, each in their own corner. On the other hand Hebrew sages believed physical reality is the media through which a greater spiritual reality is expressed; an unavoidable assumption if one actually believes God is the author of physical life. It is why orthodox rabbis' are far more positive in their faith. They search out the purpose in events, what it is that God is expressing through history, nature and circumstances.

This notion should not be so strange for us. Our 'media' is art, books, communication systems and even our bodies – all these are examples of physical realities that convey what we wish to express. And just like we will never understand the purpose of a Transceiver if we limit ourselves to the components inside, we will never understand life, if our vision is limited to life's 'Media'; Naturalism with its apparent indifference.

As an avid student of archaic Judaism and as a scientist, it's not surprising that Newton studied the dimensions of Solomon's Temple for connections with Biblical prophecy, which is to say a correlation between the timing of human events with 'the land'; the material world, the science. Newton, like the sages he respected, believed the physical realm was the media through which the spiritual realm was made known.

David Flynn believed if Newton had the tools of today he would have studied historical events and their distances to the Temple Mount just as rigorously as he sought historical significance in the internal dimensions of Solomon's Temple. Simply because he would have had the earth and its history to ponder rather than the microcosms of Solomon's Temple or Giza's Great Pyramid. Newton's Temple sketch below with Flynn's digital earth illustrates the difference a good set of tools can make.



Note that there are a variety of definitions for Statute and Nautical measurements (US, UK, etc.), as well as a variety of earth models with different accuracies, priorities and maturity. Flynn selected the FAI Sphere Model as one most in accordance with Biblical text and ancient measurement definitions. That being said we can still use Google Maps to provide a rough approximation to Flynn's measurements.

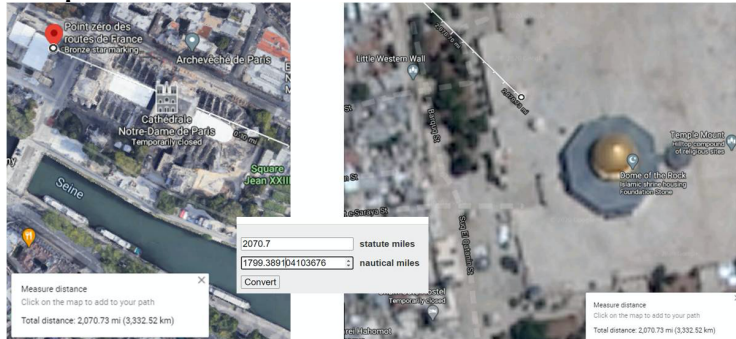
### The Exodus 1441 BC



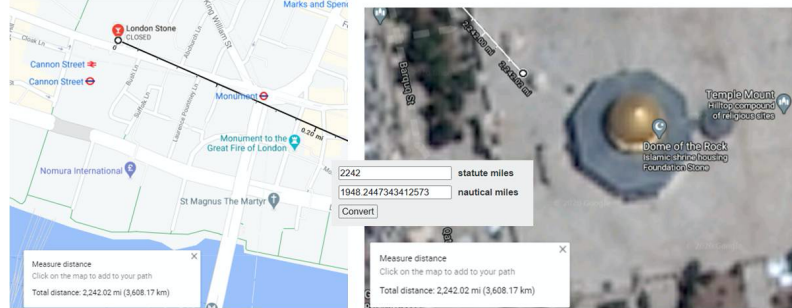
## Cyrus frees the Hebrews from Babylon 539 BC



## Napoleon's Proclamation on a Jewish Homeland in 1799 AD



## Britain releases their Mandate forming a State of Israel in 1948 AD



Some measurements do not fare as well with recent versions of Google Maps. For example Flynn measured 666.0 Nautical miles between the Temple Mount and the Kaaba, but current Google Maps equals 668.6, while an older version below is much closer. These differences are to be expected as Google Earth's original algorithms were likely simpler and resembling more the framework used by David Flynn.

